

CONTAMINATED LAND MANAGEMENT CAPABILITY STATEMENT

Services

- Pre-purchase / Pre-sale due-diligence appraisals of site contamination
- Baseline & Groundwater impact assessments
- Acid sulfate soil (ASS) assessments and ASS Management Plans
- Hazardous material assessments
- In-situ / Ex-situ Waste Classification Assessments
- Environmental monitoring (landfills, surface water, UPSS, air quality)
- Stage 1 & Stage 2 Site Contamination Assessments
- Underground tank leak assessments, UPSS removal and destruction
- Data gap analysis and data gap closure investigations
- Soil vapour assessments and vapour intrusion risk modelling
- Human Health & Environmental Risk Assessments
- Remediation Action Plans and Environmental Management Plans
- RAP and EMP implementation
- Site Remediation and Validation

Areas of Expertise

- Soil gas mitigation and vapour intrusion control
- Contaminant Hydrogeology and Fate / Transport modelling
- Regulatory advocacy
- Beneficial re-use of low-impacted Excavated Natural Materials
- In-situ & Ex-situ Bioremediation of impacted soils and groundwater
- Innovative remediation technologies and Monitored Natural Attenuation

Industry Sectors

- Land Development / Urban Renewal
- Rail, Road & Utilities Infrastructure
- Industrial & Manufacturing
- Government
- Oil & Gas
- Resources

Our Mission

Environmental Investigations Australia Pty Ltd (EI) provide effective and sustainable solutions for a range of contaminated site issues to protect human health and the environment.

Our People

EI's professional team comprises earth scientists and environmental engineers, offering over 100 years of combined experience in a range of industry sectors, collaborating with many professionals including:

- Architects;
- Town Planners;
- Site Auditors;
- Consent Authorities; and
- Regulators.

With particular strengths in carrying out adaptive environmental investigations EI's client service team delivers greater value to any project. This is achieved by maximising the amount and quality of environmental data that can be obtained from a site during the investigation phase. Using in-situ sampling and accelerated analytical techniques, EI is able to deliver quality documents on-time and on budget.

EI specialises in the assessment of soil, soil gas and groundwater conditions, geotechnical engineering, risk assessments and application of appropriate site remediation technologies.

All our staff undergo in-house and external industry training to maintain awareness of current techniques and protocols, relevant legislation and best practice in relation to on-the-job health and safety.

About EI

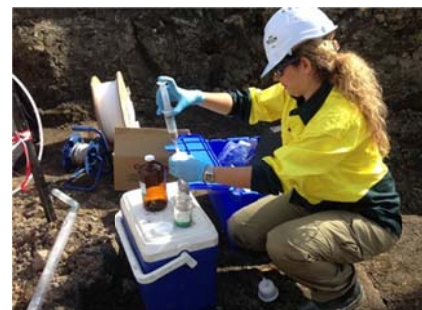
For more than 25 years EI has provided environmental assessment and contaminated soil and groundwater remediation services to a range of industry sectors, helping clients meet their operation and development goals.

EI has built an excellent reputation among EPA Site Auditors, government and state authorities and is working towards an ISO-certified QMS. EI became a member of the Australian Contaminated Land Consultants Association in 2014.

On-going responsiveness to client needs is a top priority at EI and this is reflected in our consistent growth, repeat business and ongoing referrals. Many of our projects combine geotechnical, hazardous materials and contaminated land services to the benefit of our clients.

EI pursues high safety standards in all work activities and is committed to maintaining excellence in client services.

EI's commitment to the professional growth of its staff translates into a company-wide commitment to developing effective contaminated land solutions, managing risk and overcoming complex environmental challenges.



Head Office

Environmental Investigations Australia Pty Ltd
ABN 33 102 449 507
Suite 6.01
55 Miller Street
PYRMONT, NSW, 2009

T: | 02 9516 0722 F: | 02 9518 5088
E: | service@eiaustralia.com.au
W: | www.eiaustralia.com.au

Established 1994



Member of the Australia Contaminated Land Consultants Association



CONTAMINATED LAND MANAGEMENT

KEY PROJECTS

Waste Soils Management – Mine Rehabilitation, Mount Keira, NSW

EI managed the excavation, waste classification and off-site disposal of embankment materials as part of the Kemira Mine Rehabilitation Project. Involved in-situ assessment of mined overburden soils, excavation and stockpiling of slag filling and naturally-occurring PAH-rich soils, prior to waste classification testing and landfill disposal. Landfill disposal volumes and costs were minimised by separating, large volumes of validated soils for reuse as filling on a nearby residential estate, in accordance with a site-specific RAP and with NSW EPA Site Auditor approval.



Acid Sulfate Soils Management - Cooks River Bank Remediation, Marrickville, NSW

As part of the NSW EPA's initiative to rehabilitate aging river bank shoring, a remediation program was conducted along a 750m stretch of the Cooks River, to improve the amenity and aesthetics of the foreshore and to enhance the ecological function of the river.

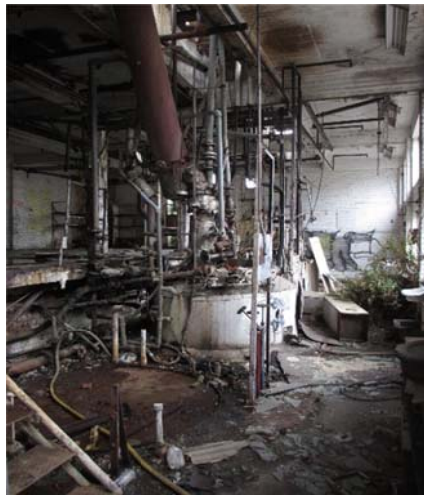


Based on the findings and recommendations of previous Acid Sulfate Soil (ASS) Assessments, EI developed and supervised

an ASS Management Plan, to minimise potential impacts associated with the disturbance of ASS during the bank remediation works. The works included calculation and specification of required liming rates to neutralise expected acidic conditions and the monitoring of groundwater and surface water quality, to assess potential impacts during the works program.

Land Remediation Urban Renewal, Mortlake, NSW

To achieve concept approval by NSW Dept of Planning & Infrastructure, EI prepared the Remedial Action Plan (RAP) and subsequently supervised the staged remediation, validation and environmental management works for the urban renewal of Mortlake Point. This was a 2.8 hectares (ha) site comprising over 35 commercial, industrial and residential lots, including six older style fibro/brick houses and many below and above ground storage tanks within the former Anzol Paint Factory.



The RAP also considered ASS along the foreshore, the potential for coal tar waste from the former Mortlake Gasworks in site fill and the presence of badly damaged asbestos sheeting and possible friable asbestos in pipework within the building fabric. Remediation and validation of soil, soil vapour and groundwater is being conducted to enable the land to be used for 15 multi-storey residential blocks with basement car parking and foreshore open space following independent audit by a NSW EPA accredited site auditor.

Remediation Planning - Land Redevelopment, Camellia, NSW

The 6 ha site, which included the former James Hardie factory, Camellia Chemical factory and a solvent drum washing facilities, located to the west of the Clyde to Carlingford Railway and immediately south of the Parramatta River, was to be redeveloped for commercial, residential and recreational uses with basement car parking.

With the goal of making the site suitable for the proposed land uses EI assessed soils, groundwater and geotechnical conditions and developed a preliminary RAP for the on-site encapsulation of over 70,000 m³ of buried,

asbestos-containing materials and localised, TPH/PAH-impacted clinker waste. The remediation strategy included onsite bio-pile treatment of soils impacted with petroleum and VOCs. EI also provided technical inputs to the landfill cell design concept.



Site Remediation & Environmental Management, Zetland, NSW

With a history of industrial uses including whitegoods manufacturing and metal foundry operations, the 2.5 ha former Email industrial site was subject to impacts including chlorinated solvents and had been notified to the NSW EPA under Section 60 of the Contaminated Land Management Act 1997. EI's work included data gap closure investigations, remediation & validation of impacted soil & groundwater, including vapour intrusion modelling, natural attenuation assessment and development of Stage-specific EMPs for commercial, residential & recreational open space redevelopment.



Head Office

Environmental Investigations Australia Pty Ltd
ABN 33 102 449 507
Suite 6.01
55 Miller Street
PYRMONT, NSW, 2009

T: | 02 9516 0722 F: | 02 9518 5088
E: | service@eiaustralia.com.au
W: | www.eiaustralia.com.au

Established 1994



Member of the Australia Contaminated Land Consultants Association

